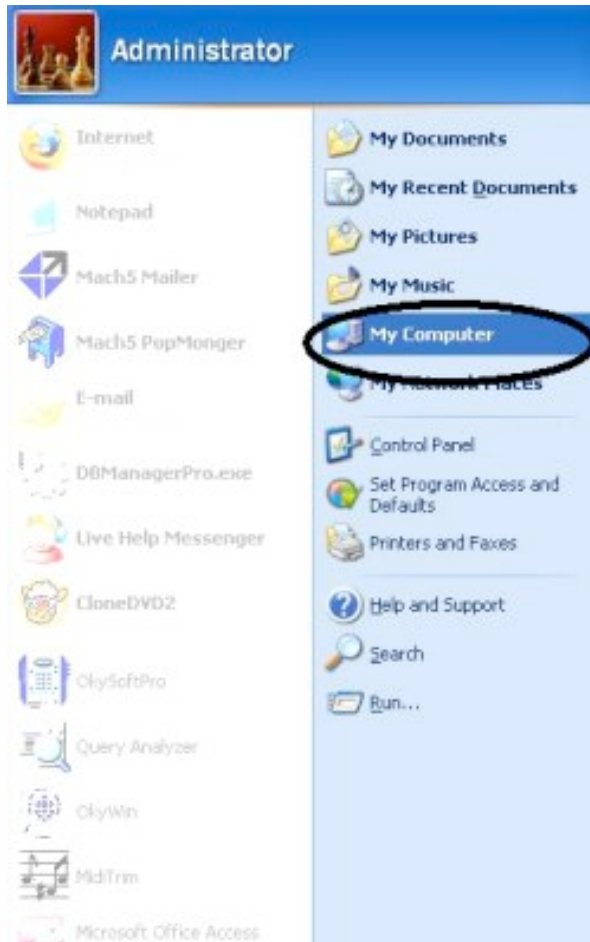


FORMAT CF CARD USING FAT 16BIT FOR USE IN OKYWEB3

New CF card MUST be formatted in your computer before being used in Okyweb3. If you have another or original Okyweb CF with songs already on the card and want to reformat, back up the songs first by transferring CF songs to PC (using OkySoft Pro) before formatting. The process is as follows:

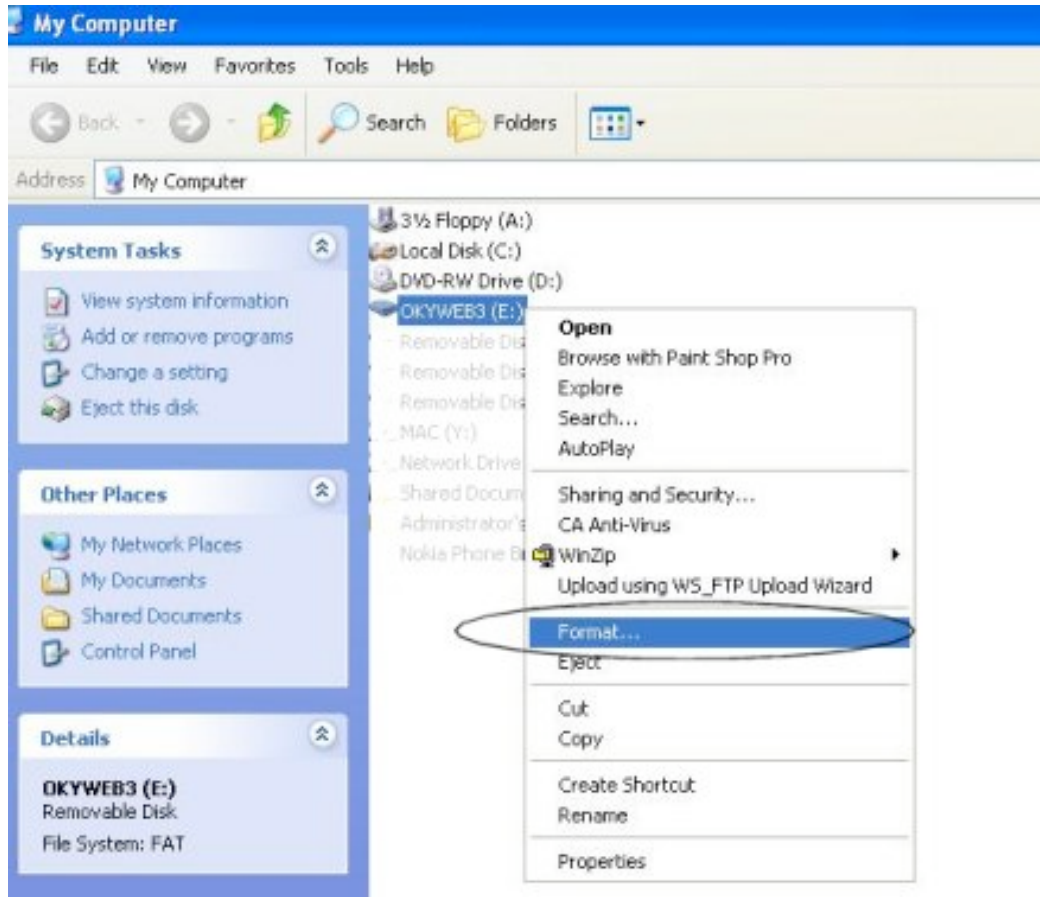
1. Insert the CF car into a card reader (USB card reader/writer available at any good electronics store).
2. In Windows, go to 'My Computer'



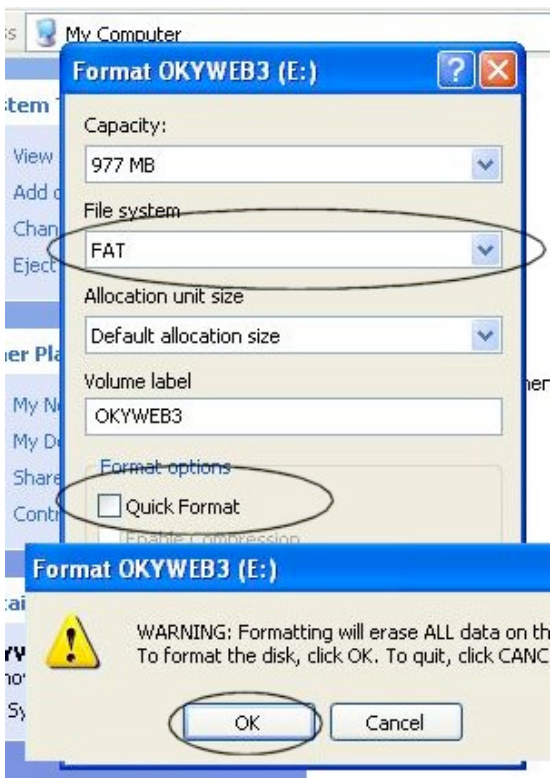
3. Select the drive that has the CF card. **WARNING:** Be 100% certain you have the correct drive selected. Never select 'C Drive' or a 'Local Drive' when formatting.

FORMAT CF CARD USING FAT 16BIT FOR USE IN OKYWEB3

4. Right Click and select FORMAT

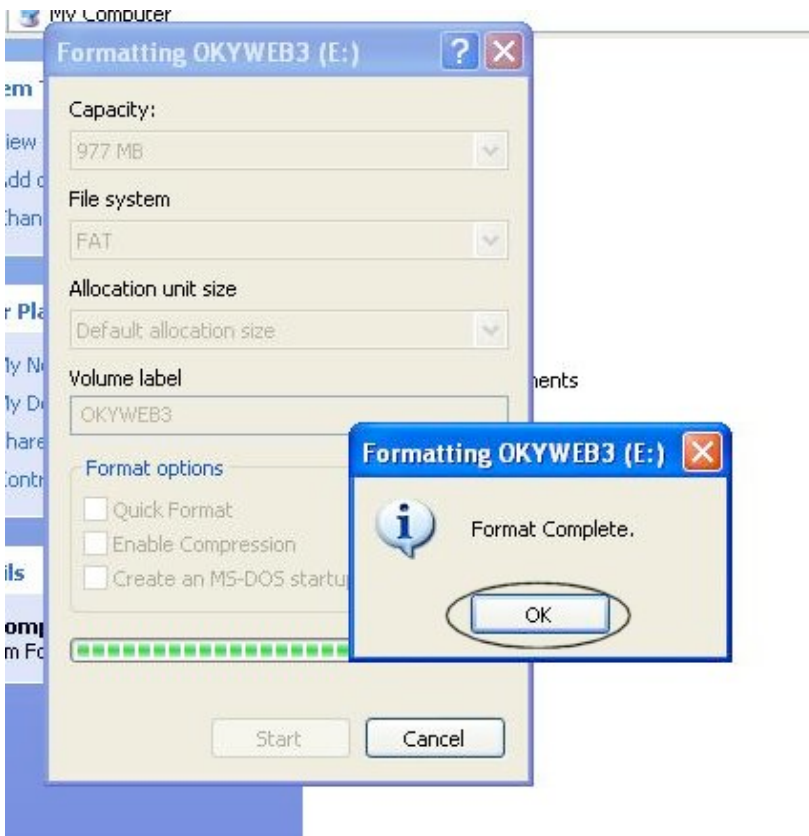


5. Ensure 'File System' is set to FAT> Leave 'Quick Format' unchecked (blank)>Press 'Start' and wait until the CF card is fully formatted. The process takes up to one minute.



FORMAT CF CARD USING FAT 16BIT FOR USE IN OKYWEB3

6: Click OK when format is complete



7: After format is complete, click the Safe Remove USB device icon (on the bottom right of your screen - see image) and Stop/Remove the USB card reader.

NOTE - The USB card reader must be safely stopped and removed otherwise the CF card will corrupt when inserted in OkyWeb3.



Safe USB remove

9. Remove the CF from the card reader and insert into Okyweb3
10. Open the software on your PC (OkySoft Pro) then power up Okyweb3
11. If you are prompted to format CF, click OK/Yes. This is a different format to the previous method. Transfer files as desired.

Important points to remember:

- 1: Optimize CF - Always insert CF in Okyweb when optimizing CF. Never optimize when CF is inserted in a external card reader. Doing so will corrupt the CF.
- 2: All personal settings are stored on the CF card. For instance, EQ settings, OPTION settings, PLAYLISTS etc must be done with the CF card inserted in the Okyweb. Never make personal settings changes when CF is inserted in a external card reader. Doing so will corrupt the CF.
- 3: When using a back up CF, check that playlists are saved. You may have to redo your playlists on a backup CF card.